

PRO-SPOT

"True non-contact measurement."

Picture Perfect Measurements™

GSI presents a measurement system for fast, accurate, dense non-contact measurement of large surfaces such as molds, master models, panels, antennas, and other components.

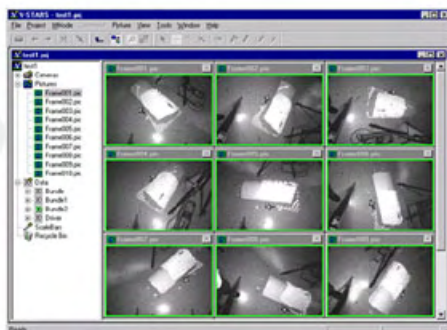


The system consists primarily of:

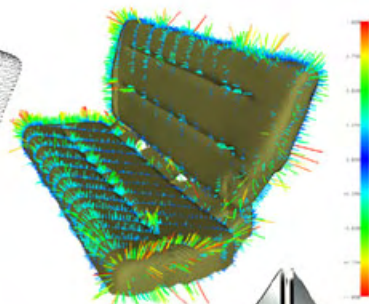
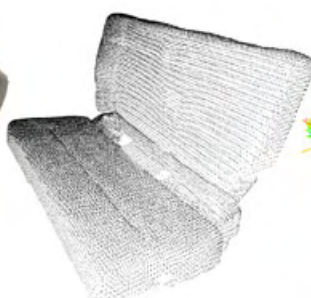
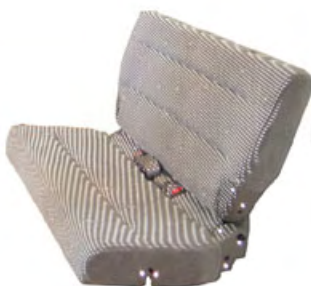
- The **PRO-SPOT** target projector
- One or more **INCA3** cameras
- Notebook computer and system software



PRO-SPOT works by projecting thousands of dots onto the surface. These dots are measured by a single camera **V-STAR/S** system or a multi-camera **V-STAR/M** system.



The **V-STAR/S** system can measure static objects by taking pictures from various locations using its single camera. The **V-STAR/M** system, by virtue of its synchronization, can freeze the dots on the surface and so is especially suited for moving objects or objects undergoing deformation.



GANCELL
www.gancell.com

27 browning st
moonee ponds
victoria,
australia 3039
p +61 3 9375 2484

1511 Riverview Drive, Melbourne, FL, USA 32901

www.geodetic.com

info@geodetic.com



PRO-SPOT

System Features...



High Accuracy

- V-STARS/S 0.010 millimeter per 1.2 meter of object size
- V-STARS/M 0.025 millimeter per 1.2 meter of object size

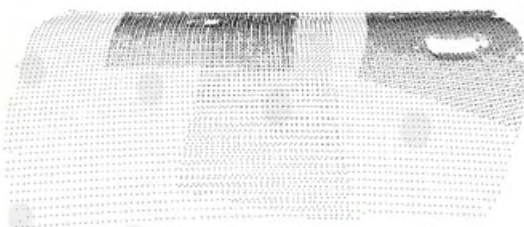
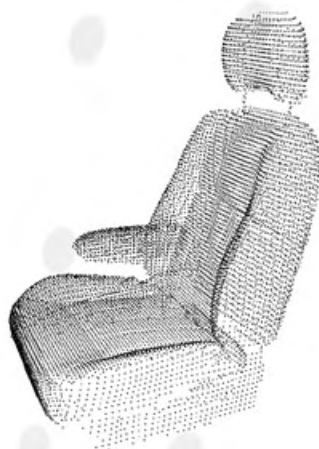


Non-contact Measurement

- No surface deformation or movement
- No time or money spent on targeting
- No cumbersome probe or reflector needed
- No target thickness or probe offset to remove

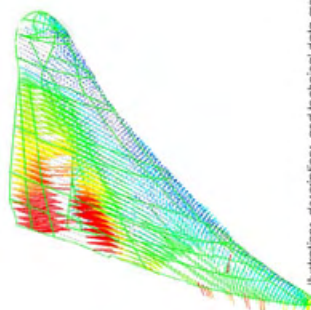
Fast

- Instant data acquisition with V-STARS/M
- Minutes with V-STARS/S
- Fast, simple set-up and operation
- Fully automatic measurement
- 3D measurement of thousands of points in less than a minute



Versatile

- Portable (Camera - 4kg, Projector - 5kg, notebook computer)
- Variable point densities (up to 22,000 points per setup)
- Variable point patterns
- Measures objects up to 6 meters in diameter in a single setup
- Measurement volume practically unlimited using multiple setups
- Rugged system designed for in-place measurement in industrial environments (Temperature 0 - 40°C)



For more information on this exciting new development in measurement technology please contact GSI.

GANCELL
www.gancell.com

27 browning st
moonee ponds
victoria,
australia 3039
p: +61 3 9375 2484

1511 Riverview Drive, Melbourne, FL, USA 32901

info@geodetic.com

Tel: +1 (321) 724 6831 Fax: +1 (321) 724 9253

www.geodetic.com

